

Application

Apply Concrete Art Coating on a clean, stable and smooth surface (**MDF, interior plywood, laminated counters, finished joints in interior drywall, painted walls, ceramic (leveller required), fibre cement, etc.**)

For each step of the application, ensure the temperature is in between 15°C (59 °F) and 22°C (71°F) and a humidity of 75% or less. These conditions allows a drying time that is neither too fast nor too slow.

Follow the directions on the labels.

PREPARING THE SURFACE

Clean with the Concrete Art Coating TSP and rinse thoroughly (on every surface needing to be cleaned).

DRYWALL: Finish the joints before painting, with paper and corner bead.

ON CERAMIC: Ensure each tile is stable, clean with the Concrete Art Coating TSP, and rinse. Apply the Primer on the entire surface; apply two coats if joints are porous. Allow it to dry for 45 minutes or longer. Prepare the Concrete Art Coating Ceramic Leveller, fill the joints using a trowel, let it dry for about 45 minutes, and then apply a thin layer to level the ceramic. Let dry for 24 hours, if needed remove the excess using a trowel and follow steps 1 to 4.

ON PLYWOOD: NOT RECOMMENDED by Concrete Art Coating; the surface could produce micro-cracks, forcing the concrete to crack. If the use of plywood is still desired, Concrete Art Coating would recommend applying a liquid membrane before starting the project.

STRUCTURE CONSTRUCTION: Use MDF, interior plywood, fibre cement, K3 boards, etc.

Stick the structure together with glue. A use of screw and/or nail can be used for an optimal stability. Apply fibreglass tape to all the joints. Use the Concrete Art Coating Leveller to even out surface if needed.

OUTDOORS PROJECTS: Get the Concrete Art Coating Kit for outdoors. Use waterproof construction materials such as fibre cement, marine plywood, balcony plywood or others. Follow then the steps above:

Structure construction.

We recommend applying the liquid membrane to make the material water resistant, resulting in an increased lifespan.

CONCRETE
/ LES ENDUITS

Art

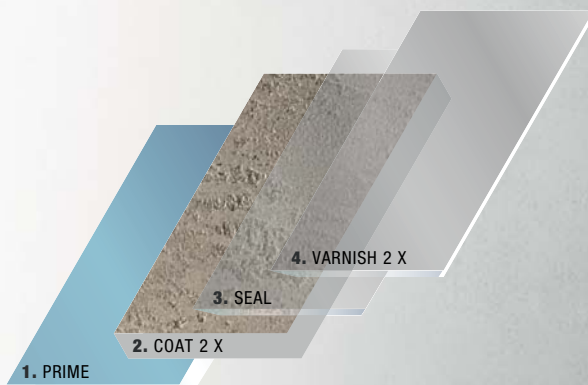
COATING / BÉTON

IMPORTANT: This concrete coating is water-resistant but will not tolerate permanent and total immersion. We therefore recommend a covered or a vertical project. The structure needs to be protected from certain weather such as snow, humidity or rain; using a tarp or another appropriate solution. Our concrete product coating can be used for outdoor projects. Please note that Concrete Art Coating cannot offer any expressed warranty since it is impossible to control the conditions of installations and exposure to bad weather.

IN SHOWERS: Get the Concrete Art Coating kit for showers, which contains 2 coats. Buy additional urethane for optimal protection. Concrete Art Coating recommends the installation of a shower system that is ready for ceramic and includes a shower base (EX: schluter KERDI-BOARD/SHOWER TRAY kit, or equi-valent) .

Always follow the industry standards, like proper slopes and drainage. When building a shower, use waterproof construction materials such as fibre cement, water-resistant drywall, marine plywood or others. Ensure total stability of the structure, coat drywall joints, apply fibreglass tape on plywood joints, etc. The Concrete Art Coating Leveller can be used if needed, always in thin layers. Apply Concrete Art Coating Liquid Membrane to make the entire materials' surface waterproof. Insert the Sealing tapes between two liquid membranes coats on all joints where water could infiltrate. If using the Schluter membrane, avoid any bubbles formation.

In this case, there are is no need of the Concrete Art Coating liquid membrane. The Concrete Art Coating system is designed for showers. Please note that Concrete Art Coating cannot offer any expressed warranty since it is impossible to control the conditions of the installation.



VENTILATE THE ROOM DURING APPLICATION



artbeton.ca



Application Steps

Preparation products (optional) *Always starts with the Primer

Ceramic Leveller: Prepare the leveller following the instructions on the label. Apply 1 to 2 coats using a trowel to level the surface, apply in thin layers. Let it dry for 24 hours then follow steps 1 to 4.

Liquid membrane: Apply 2 coats using a roller, leave 1 hour or more between coats. Insert the Sealing tapes between two fresh liquid membrane coats on all joints where water could infiltrate. Let it dry for 24 hours then follow steps 1 to 4. Allows waterproofing the surface before starting the project.

Step 1

Apply the Primer on the entire surfaces ; 1 to 2 coats.

Apply fibreglass tape on the joints to prevent the structure from cracking (if needed). Apply the Primer on a smooth, dry and clean surface using a small foam roller or a short nap roller and a paintbrush. Allow to dry for about 45 minutes or longer.

*If the primer is quickly absorbed during the application or if the surface is too porous, two coats can be necessary.

Step 2

2 coats concrete Art Beton

Dry mix the concrete in its container with a stick to harmonize the pigments. Put in a bigger container and add water following the instructions on the label. Mix with a mixer set in a drill for 5 minutes until the texture is homogeneous, scrape downsides using a stick. Apply 2 thin coats (less than 1 mm) using a trowel working in semicircles, wait about 45 minutes or longer between each coat (use a fan to accelerate curing time). Apply within 4 hours after mixing, always cover the container. Sand the next day using an orbital sander, a 150-grit sandpaper, and then a 180-grit or a 350-grit for a smooth finish. Get rid of any dust using a dry cloth. Sanding is essential and will slightly modify the concrete's colour. It's normal!

CONCRETE
/ LES ENDUITS **Art**
COATING / BÉTON

The smoother the concrete is, the more vibrant the colours will be.

Step 3

Sealer (2 choices) 1 to 2 coats

*** On a large surface, moisten the concrete with water using a spray bottle during the first coat ***

Wall Sealer, 1 coat, dry 1 to 3 hours or longer

Impregnator Sealer, 2 coats, 1 to 3 hours or longer between each. Allow to dry for 4 hours or longer before step 4.

Apply using a foam roller or a short nap roller and a paintbrush, avoid streaks or bubbles. Make sure to fill in all the concrete's pores.

Step 4

Varnish or Urethane 2 to 4 coats

Wall Varnish (2 coats)

Counter Varnish (2 to 4 coats)

Urethane (follow instructions for urethane applications) (2 to 4 coats) *Details at the end of the document*

Between 2 and 4 coats are needed according to the protection desired, use a small short nap roller or foam roller with a paintbrush, avoid streaks or bubbles. Wait approximately 1 to 3 hours between coats or longer, sand using a 220-grit between coats.

Thank you for your trust and have a real concrete project!



Important details

- Allow additional Concrete for a textured finish, on irregular surfaces and on floors. Always add minimum 20% additional concrete than your surface in ft2. It is not unusual to put more than necessary and run out.
- Allow additional Varnish or Urethane for better protection, 2 coats included
- Allow additional Primer on porous surfaces, with Leveller and Liquid membrane

KITS (before taxes)

Price and content

WALL, COUNTERTOP, FLOOR KIT

	WALL	COUNTERTOP/FLOOR
35 ft²		
Primer 500 mL	\$114.85	\$161.76
Concrete Art Coating Coating 1.5 kg	\$3.28/ft ²	\$4.62/ft ²
Sealer (wall or impregnator) 500 mL		
Varnish (wall or counter) 500 mL		
70 ft²		
Primer 500 mL	\$153.06	\$211.74
Concrete Coating 3 kg	\$2.19/ft ²	\$3.02/ft ²
Sealer (wall or impregnator) 500 mL		
Varnish (wall or counter) 1L		
140 ft²		
Primer 1L	\$287.56	\$394.28
2 x Concrete Coating 3 kg	\$2.05/ft ²	\$2.82/ft ²
Sealer (wall or impregnator) 1L		
2 x Varnish (wall or counter) 1L		



WALL
starting at
114.85\$CAD

URETHANE KIT - COUNTERTOP, SHOWER, ETC.

35 ft²	Primer 500 mL	\$222.41
	Concrete Coating 1.5 Kg	\$6.35/ft ²
	Impregnator Sealer 500 mL	
	Urethane	
70 ft²	Primer 500 mL	\$243.41
	Concrete Coating 3 Kg	\$3.47/ft ²
	Impregnator Sealer 500 mL	
	Urethane	
140 ft²	Primer 1	\$457.62
	Concrete Coating 3 Kg	\$3.26/ft ²
	Impregnator Sealer 1L	
	2 x Urethane	



URETHANE
starting at
222.41\$CAD

PRICE PRODUCTS



Product/size	Covering	coat needed	Price
Primer 500 mL	70 ft2	1 (2)	\$16.80
Primer 1L	140 ft2	1 (2)	\$26.72
Concrete coating 1.5 kg	35 ft2	/ 2 smooth coats	\$38.95
Concrete coating 3 kg	70 ft2	/ 2 smooth coats	\$59.95
Wall sealer 500 mL	70-100 ft2	1	\$29.15
Wall sealer 1L	140-200 ft2	1	\$46.62
Impregnator sealer 500 mL	70 ft2	2	\$56.66
Impregnator sealer 1L	140 ft2	2	\$91.00
Wall varnish 500 mL	70 ft2	2	\$29.95
Wall varnish 1L	140 ft2	2	\$47.16
Counter varnish 500 mL	70 ft2	2 to 4	\$49.35
Counter varnish 1L	140 ft2	2 to 4	\$78.33
Urethane	140 ft2	2 to 4	\$110
Concrete leveller 1.5 kg	35 ft2	1 to 2	\$29.92
Concrete leveller 3kg	70 ft2	1 to 2	\$48.95
Liquid Membrane 2.85 kg	140 ft2	2	\$71.66
Sealing tape	12 ft		\$7.99
Grease-removing cleaner TSP Concentrated 500 mL			\$6.89
Grease-removing cleaner TSP Concentrated 1L			\$8.59

FOR ALL YOUR PROJECTS YOU CAN REPLACE THE VARNISH WITH URETHANE FOR A HIGH PERFORMANCE FINISH

*ARTBÉTON COATING IS FLAMMABLE. FOR USE ON A FIREPLACE DECORATION WALL, IT MUST BE APPLIED ON FIBROCEMENT OR OTHER FLAMMABLE MATERIAL

COLORS

OTHER COLORS ON SPECIAL ORDER

WIDE SELECTION OF AVAILABLE WHITES

visit <http://artbeton.ca/EN/colors.html>

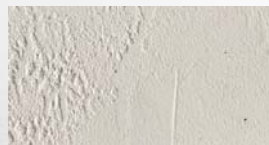
TOFFEE



MULOT



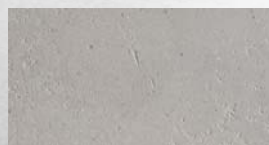
CHARTREUX



FLANELLE



TITANE



ARONIA



KIT WITH URETHANE

Instructions

The Concrete Art Coating Urethane is a two component, waterborne, low odour, VOC compliant top coat. This high performance product has excellent clarity and offers a silky and non-yellowing finish.

WHERE TO USE: Hospitals and healthcare facilities, schools, colleges and universities, grocery and department stores, commercial and industrial environments, restaurants, food plants, etc.

Use for showers, counters or greatly solicited space, and any surfaces where you want optimal quality.

For your project with Concrete Art Coating, the urethane replaces the varnish to achieve the best quality.

****IMPORTANT, READ ALL INFORMATION****

Thank you for your trust and have a real concrete project!

CONCRETE
/ LES ENDUITS

Art

COATING / BÉTON

Steps to follow:

1. Follow steps 1 to 3 of the Concrete Art Coating application
2. Applying urethane using a short nap roller or a foam roller:
 - Ensure the temperature is in between 15 and 25 degrees Celsius (between 59 and 71 °F) with a humidity of 75% or less.
 - Prepare only the necessary quantity, pour component A in a container and add component B. Follow the recommended ratio, mix for 5 minutes using a small stick, apply within 20 minutes of mixing.
 - Apply quickly and uniformly, avoiding applying too much or leaving excess.
 - DO NOT TOUCH THE SURFACE more than 1 minute after application.
 - Apply the second coat within 3 to 24 hours after application, sand lightly between layers using a 220 grit.

This data is consistent with our tests under controlled conditions. Each environment is different.

